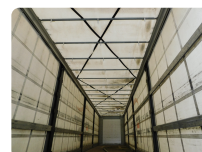
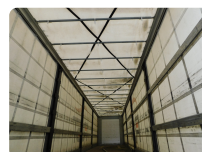


TRADE OFFER

Date: 21.11.2024

FLIEGL (COD 83161)



GENERAL TECHNICAL SPECIFICATION AUTOCHASSIS

MARK: FLIEGL

MODEL: SDS 390

1ST REGISTRATION: 2014

MILEAGE: 0

CHASSIS

Gross vehicle weight (kg)	39000
Net vehicle weight (kg)	6647
Tyres	10% 385/65R22,5;20% 385/65R22,5;5% 385/65R22,5
Axels	3
Front brakes	DISK
Rear brakes	DISK
Front axle suspension	PNEUMATIC
Rear axle suspension	PNEUMATIC

BODY INFO

Body type	Prelata role usi la spate
Dimensiuni caroserie	13600.0 X 2470.0 X 2800.0
Volum caroserie	94.06
Info caroserie	Fliegl

CABIN

Cabin colour	WHITE
--------------	-------

PRICE

7900 + VAT

FINANCING

Do you need a financing solution for this offer?

We are at your disposal with a dedicated team of specialists, for consultation and support in order to obtain financing.



email: sales.used@aictrucks.ro

telefon: 021.202.60.00

web: www.cefintrucks.com

adresa: Autostrada Bucuresti-Pitesti, Km 13,2

Str. Italia 1-7, Comuna Chiajna 077040, Jud. Ilfov