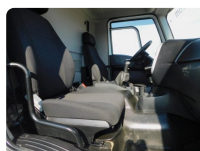
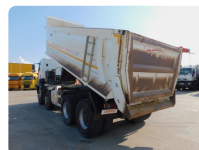


BASCULANTA FORD (COD 76582)



Avans:
15% sau
camionul tau vechi
(valoarea garantata 4500 Euro)
Rata lunara: de la
750 Euro+TVA



SPECIFICATIE TEHNICA GENERALA AUTOSASIU

MARCA: FORD

MODEL: 4142D 8X4 DCAB E6 16S2230

AN PRODUCTIE: 2018

KILOMETRI: 66.917

CABINA

Numar locuri cabina

2

Culoare cabina

FROZEN WHITE

Tip cabina

DCAB

MOTOR

Tip combustibil

DIESEL

Putere motor cp

420

Norma de poluare	EURO VI
Tip motor	FORD ECOTORQ 12.7 LT
Cilindree cmc	12740
Cutie de viteze	MANUALA ZF 16S 2230

SASIU

Suspensii fata	PARABOLIC
Frane spate	DRUM
Masa maxima autorizata kg	39000
Frane fata	DRUM
Axe	8X4
Suspensii spate	PARABOLIC
Ampatament mm	5100
Masa proprie kg	16585
Anvelope	315/80 R22.5 PIRELLI

CAROSERIE

Volum caroserie	18.0
Tip caroserie	Basculanta Bena semirotunda
Info caroserie	18 cbm halfpipe tipper, Hyva kit, tarpaulin, asphalt extension

PRET

63700 + VAT